

Year 9 Biology Homework Set 1,2,3

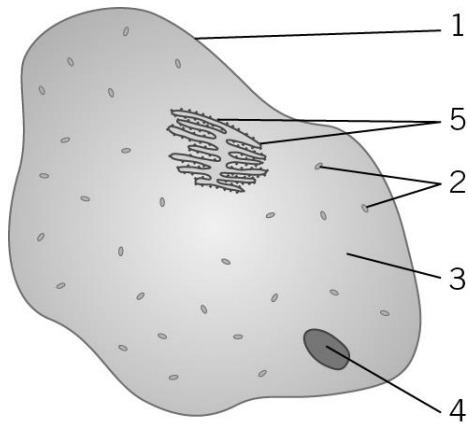
Name : _____

Set : _____

B1 Cell structure and transport – Aiming for Grade 6

1 Label each cell diagram correctly.

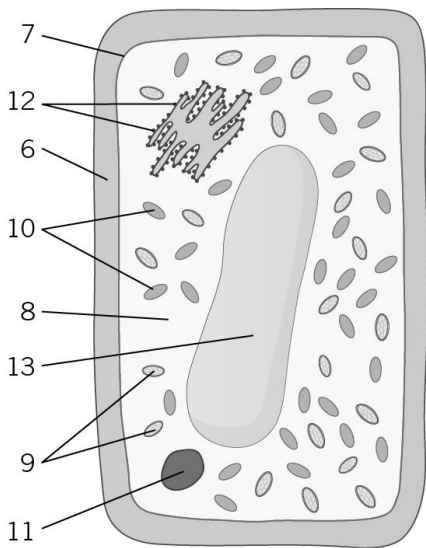
a



- 1
- 2
- 3
- 4
- 5

(5 marks)

b



- 6
- 7
- 8
- 9
- 10
- 11
- 12
- 13

(8 marks)

2 Give the function of each cell part.

(8 marks)

Cell membrane Vacuole	
Chloroplast Cytoplasm	
Cell Wall Nucleus	
Mitochondria	
Ribosomes	

- 3 Fill in the table to explain the function and special features of some specialised cells.

(4 marks)

Type of cell	Function	Special features
Root hair cell		
Fat cell		
Type of cell	Function	Special features
Cone cell		
Xylem cells		

Learning outcomes

To design a display on cell biology for the Natural History Museum.

The Natural History Museum is preparing a new exhibition on cell biology and transport. They have asked you to prepare some materials that could be used as part of their display.

You are to produce one detailed posters for them, the first on cell structure. They have given you the following guidance as to what they would like to see in their display.

Cell structures

Your poster should explain:

- the features of plant and animal cells and their functions
- the features of eukaryotic and prokaryotic cells and their functions
- some examples of specialised plant and animal cells and how they are adapted to perform their functions
- details about light and electron microscopes that are used to study cells, with an explanation of how to calculate the specimen size from a microscope image.