

Year 9 Science Homework Aiming for 4

Year 9 Biology Homework Set 4 & 5

Name : _____

Set : _____

B1 Cell structure and transport – Aiming for Grade 4

Aims

You should be able to:

- name key features of cells and recognise what each does
- recognise specialised cells and describe their function
- state that substances have to move in and out of cells and describe some of the ways that this is done.

Learning outcomes

After completing this activity, you should be able to:

- label the main parts of a plant and animal cell and describe their functions
- describe how substances are transported in and out of cells.

Task

1 Link each cell part with the correct function.

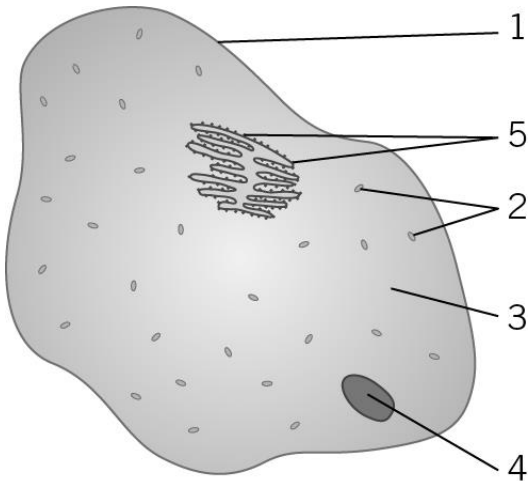
(6 marks)

Cell membrane	Controls all the activities of the cell.
Chloroplast	Controls what goes in and out of the cell.
Vacuole	Filled with cell sap. Keeps the cell rigid to support the plant.
Nucleus	Absorbs light energy to make food by photosynthesis.
Cell Wall	A liquid gel in which most of the chemical reactions needed for life take place.
Cytoplasm	Made of cellulose, strengthens the cell and gives it support.

2 Use the labels provided to identify the different structures of an animal cell and a plant cell. Each label can be used more than once.

cell membrane cytoplasm mitochondria chloroplasts
 nucleus ribosomes vacuole

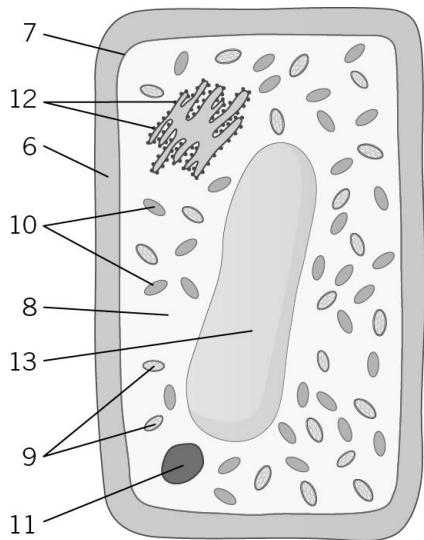
a



- 1**
- 2**
- 3**
- 4**
- 5**

(5 marks)

b



- 6**
- 7**
- 8**
- 9**
- 10**
- 11**
- 12**
- 13**

(8 marks)