



BROAD



HORIZONS



Spring 2025

Broad Horizons

Enrichment Curriculum

We are delighted to be able to share our Broad Horizons offer for Spring 2025 so that there are even more fabulous enrichment activities to take part in. All students will participate in a 'collapsed timetable' opportunity every Thursday Week A, period 4 as part of the normal school day. Inside you will find some regular favourites along with some new activities designed to open up new opportunities and experiences.

Students will get involved in exciting opportunities to develop health and wellbeing, develop new and exciting skills, and to support the community.



Whether it is angling or art, fitness or football, forensics or community gardening, there really will be fantastic opportunities for everyone at the school.



FREQUENTLY ASKED QUESTIONS

Will I need specialist equipment?

No. Any technical equipment will be provided. PE kits, waterproof clothing and trainers or sturdy shoes will be needed for some activities.



How long will each activity last?

Each activity will last for 1 term (approximately 6 sessions). You will select a new activity each term.

Is there a cost?

Some activities may have a small cost but this will not be a barrier to participation. Please do speak to us if you have concerns around finance.



In a change from previous years, all students will sign-up for activities in school and will be supported to do this by their teachers.



FOR MORE INFORMATION

www.hayleacademy.net/broad-horizons/

rwilson@hayle.tpacademytrust.org

**We inspire students to dream big,
to achieve more.**



These activities are designed to help support personal development and wellbeing. They can lead to increased mental or physical fitness, and support employability skills such as teamwork and communication.



Activity	Staff	Location	What do you need to know?
KS4 Fitness	NBI	Fitness Suite	<p>We will be looking to improve our sporting performance through improvements to our components of fitness. We will cover a variety of methods of training using the fitness suite as well as the outdoor areas. We will also look at programme design, application of sets/reps and exercise selection.</p> <p>This is for KS4 students only and PE kit is required.</p>
Trail Running	ABL	Room 43 / offsite in various locations using school minibus transport	<p>Trail running is a sport that combines running and hiking over natural terrain. It emphasizes endurance, agility, and a connection with nature. This will be an all-weather activity and will involve offsite running on tough terrain.</p> <p>A sturdy pair of trainers required and a love of rain and mud advised!</p>
The Art of Arguing Well	IHA	Room 6	<p>This will give students a chance to decide their opinions, formulate their point of view, articulate ideas and challenge each other using a range of techniques. This supports students to use and develop their oracy skills - a valuable skill that is highly sought after in employment and in preparation for Post-16 life.</p>



These activities are designed to help support personal development and wellbeing. They can lead to increased mental or physical fitness, and support employability skills such as teamwork and communication.

Activity	Staff	Location	What do you need to know?
Swimming for Beginners	THO	Room 7 / St Ives Leisure Centre using school minibus transport	<p>We feel that being able to confidently swim a minimum of 50 metres is a crucial life skill and supporting our students to do this is one of our Hayle 365 offers. Students who wish to take up this offer will be in a small group and will work with Mrs Hosking to develop their confidence and ability in the water. During this course, there will also be a session based on beach safety and recognising dangerous swimming conditions.</p> <p>Swimming kit is required. This activity is only suitable for students who cannot swim 50 metres.</p>
10x Challenge	DHU	Room 44	<p>Students have 4 weeks to research, create, plan and run their own business with a £2.00 pledge (provided by the school). This is a highly interactive programme offering first hand experience to enhance self confidence and entrepreneurial mindsets. Willingness to work as part of a team - essential!</p>
Psychology 101	SVB	Room 26	<p>What makes people tick? Why do some people behave the way they do? Why do different things affect your mood and confidence? If you've ever spent time thinking about these puzzles, psychology might be for you. Psychology is the scientific study of the mind and human behaviour. Psychologists observe and conduct experiments to find out more about the way people act and interact. Students who choose this should be interested in this area of scientific study.</p>



These activities are designed to help support personal development and wellbeing. They can lead to increased mental or physical fitness, and support employability skills such as teamwork and communication.

Activity	Staff	Location	What do you need to know?
Cycling for Beginners	GHA and Sustrans	Room 28/Outside	<p>We feel that being able to confidently ride a bike is a valuable life skill and supporting our students to do this is one of our Hayle 365 offers. Students who wish to take up this offer will be in a small group and will work with our external provider, Sustrans, alongside Mr. Hanner to develop their confidence and ability to ride a bike. During this course, there will also be a focus upon road and cycle safety.</p> <p>This activity is only suitable for students who cannot already confidently ride a bike.</p>
All-Weather Fitness Bootcamp	MLE/ LWE	Room 1 & 2 and outside (in all weathers!)	<p>Develop your physical strength and mental resilience in this all-weather fitness bootcamp. Be prepared to be challenged to achieve at your own personal best and look forward to the mental and physical rewards of giving 100% each session.</p>
World of Books	MRI	Library	<p>Step into different worlds, times and characters with this opportunity to develop your own reading for pleasure. Learn about different genres, authors and techniques over this programme. You might even have a go at writing your own short story, novel, or non-fiction text.</p>
Year 11 Personal Study	RLE/ JHE	Room 4 & 5	<p>This is an opportunity for Year 11 students to complete private study in a quiet, supervised space in preparation for their GCSE's. Students will be expected to come prepared with work to complete or specific areas of revision to work on during these sessions.</p>



This is an opportunity for students to develop a new skill that goes beyond a traditional school curriculum.



Activity	Staff	Location	What do you need to know?
Make it Special	DCO	Room 19	Are you a DT enthusiast, or keen to develop your practical and creative skills making something special, perhaps as a gift? This is the activity for you! – It's Spring Time: create a spring themed clock ; make a bird nest box or Bug Hotel .
Amateur Radio	HEM and external experts	Towans 2	This is a fantastic opportunity for students to get involved in the fascinating world of amateur radio . Students will learn about the science behind radio communications, learn how to communicate fluently on the radio and also have a chance of contact with the international space station (ISS). This is a truly unique experience and places will be limited to a maximum of 12. Those selected will need to have shown a keen interest in their science curriculum.
Forensics	AFE	Room 27	Can you solve the crime? Using scientific knowledge students can immerse themselves into the world of CSI. Each session will involve various aspects of forensic skills and criminal law that will build you into the budding young forensic scientist. This activity is for KS3 only .
Year 8 & 9 Basketball Umpiring Skills	NIR	Gym	During each session we will develop the umpiring of each student so they can then umpire, score and time keep as well as help organise/run House basketball competitions . PE Kit is needed. This is an umpiring course.



This is an opportunity for students to develop a new skill that goes beyond a traditional school curriculum.

Activity	Staff	Location	What do you need to know?
Box-fitness	HEI	Canteen	This activity will enable you to learn basic boxing and Muay Thai skills coupled with fitness elements. Under the supervision and tutition of trained teachers, you develop the core skills needed in these areas.
Table Tennis	LKN	Hall	Opportunity to hone your reflexes, co-ordination and develop your teamwork . We will have friendly competitions and teach and share new skills. PE kit is needed.
Code Challenge	EPK	IT1	Immerse yourself into a set of coding challenges that requires problem solving, working in a team, beating the clock and thinking both inside & outside the box.
Archery	RRA	Room 20 /Ludgvan Community centre using school minibus transport	Students complete the Archery GB Introduction to Archery course under the expert guidance of Archers of the West . All equipment and safety briefings are provided and this really is a fantastic opportunity for students to develop a 'new string to their bow' ! This course has a £30 fee. Please contact Mr Radford for further information.



This is an opportunity for students to develop a new skill that goes beyond a traditional school curriculum.

Activity	Staff	Location	What do you need to know?
Mandarin Chinese	ASA	Room 14	This is an opportunity to learn the second most spoken language in the world with over 1.1 billion speakers. Put yourself ahead of the game in terms of your global citizenship and ability to communicate effectively. Alongside learning the language, you will discover the history and culture that has shaped China to be the global superpower that it is today.
Coarse Fishing	DTA	Room 3 / Kernow Coarse Fishery, Hayle using school minibus transport	This activity will be six week course where you will learn the basic skills of fishing and new techniques. This course will come with tuition and all equipment will be provided by the fishery. This Broad Horizons option will be an all weather activity where you will experience different fishing conditions. There is a £60 cost to this activity. Please do contact the school if we can support with a payment plan.
Makaton Signing	NTH	ARB	Makaton is a unique communication programme that uses symbols, signs and speech to enable people to communicate. It supports the development of essential communication skills. Learning Makaton helps to support our own communication skills, along with supporting others to communicate comfortably. This is a highly sought after skill in workplaces worldwide and is part of our Hayle 365 offer.
Treasure Hunt	KOW	Room 9/Outside	Spend your afternoon finding treasure at Hayle Academy ! This Broad Horizon option will enhance your cognitive skills, promote physical activity, foster teamwork and social skills and build your confidence and independence. Whether you are solving clues and riddles inside or out and about school, you will be having fun in competing against other teams to win your prize.



This is an opportunity for students to develop a new skill that goes beyond a traditional school curriculum.

Activity	Staff	Location	What do you need to know?
The Great Hayle Sewing Bee	RSO	Room 22	Just like the TV show , our amateur sewers take on challenges as they compete to be crowned Hayle's most sensational seamster and designers! Students taking this option do not need any sewing experience and will have the opportunity to up-cycle clothing and furniture to reflect their personality and taste. Have fun, create, GO!
Bakers' Oven	RTR	Room 17	Develop further skills in making baked products, both sweet and savoury. Students will need to supply ingredients but support is available for anyone in receipt of FSM.



**Develop
Community**

At Hayle Academy we feel strongly about supporting our local and global communities. These activities enable students to play an active role in their community.



Activity	Staff	Location	What do you need to know?
Community Garden	KBA	Room 12 / Penpol Terrace (walking)	Create and maintain a Hayle In Bloom plot in order to take part in the Britain in Bloom competition. Students will be able to identify plants/weeds and know how to ensure a garden can thrive. Most importantly, students are able to give back to the community and take a pride in their efforts! Students do participate in all weathers so some sensible footwear and waterproofs recommended.
Beginners Bushcraft	ZPE	Towans 1	Develop your survival skills in this beginners bushcraft course. Students will complete this all-weather course and have the opportunity to try outdoor camp cooking, den building, tent erection. Please note, this is for KS3 students only and places are limited to 12 students.
Football Coaching Theory	LSA	Outside/Room 10	Develop your skills in the area of football coaching. Learn the theory behind some of the greatest coaches and their success, and put this into action in your own play. This will be a mix of theory and practical. Kit and iPad essential.



At Hayle Academy we feel strongly about supporting our local and global communities. These activities enable students to play an active role in their community.

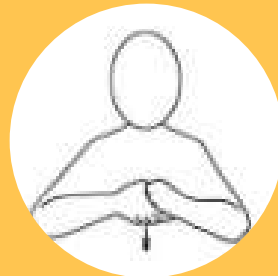
Activity	Staff	Location	What do you need to know?
Marine Conservation	JRO	Room 29	Understanding the local marine environment and ways we can conserve these precious habitats will be the focus of our ' marine conservation project '. Weather permitting, students will be able to visit marine based ecosystems locally.
Around the World through International Film	SSA	Room 13	Discover a different culture each fortnight, through the medium of film - this option will take you around the world and back, opening your minds and imaginations to what lies beyond where we live, and building dreams for your future!
Leach Pottery Transition Project	ATR	Room 46	Work closely with Leach Pottery and students from a local primary school creating art works to be gifted to someone in our local community. Workshops are led by Leach pottery alongside staff from Hayle Academy and a local primary school. In this project we plan to work with an apprentice potter from Leach who will show students how they create pieces on a throwing wheel. You will tell the potter how to create a set of plates/pots/bowls/cups and as a team you will all decorate them. You will be part of the production line and rather than selling the work at the end it will be gifted to someone in the community alongside work being shown in the Leach pottery museum. Wow!

The ARB



Our Broad Horizons curriculum aims to be inclusive to all and we have been delighted with how well all students have been able to participate and engage in these unique personal development opportunities.

Students who attend the ARB can select from any of the opportunities offered within this booklet for the Summer term.



Alternatively, ARB students have the unique opportunity to take part in 'Makaton' which is available to students who attend the ARB and a small group from the wider school.

If you have a child who attends the ARB and have any queries about Broad Horizons, please do speak to Miss. Thomson



Broad Horizons will take place every Thursday Week A. For the Spring Term, this will be:

- 9th & 23rd January
- 6th & 27th February
- 13th & 27th March



Students will attend school in their full school uniform or full school PE kit. If specialist clothing is required, students will need to change into these during the lunch break if directed by their session leader. Activities will take place in all weathers so some waterproof clothing may be advisable for some activities!



Lunchtimes will be slightly adjusted to give the maximum time for each activity. All students will have their lunch between 12.50-13.30 with activities running from 13.30-15.05.



We will expect the usual high standards of behaviour from all students. Students will be rewarded during the sessions using the house point system. Any incidents of poor behaviour will be managed following the school behaviour protocols. Groups are not allocated according to friendship to encourage students to work with a range of people across different year groups.



We aim for all students to be able to do either their first or second choice activity and will inform students of allocations as soon as possible. Activities do vary throughout the year.



Where students are completing an offsite activity, they are responsible for being at the meeting point at the correct time - even if this is during lunchtime.

KS3 School Production

As an alternative to the regular Broad Horizons offer, you have the option to audition to perform in our 2024-25 school production of...



Students have already signed up for this and will not need to complete another Broad Horizons options form for Spring 2025.

This Broad Horizons option will be for the full academic year and students will not select another option. Therefore, commitment is essential.

For further information, please do speak to Miss. Rule.